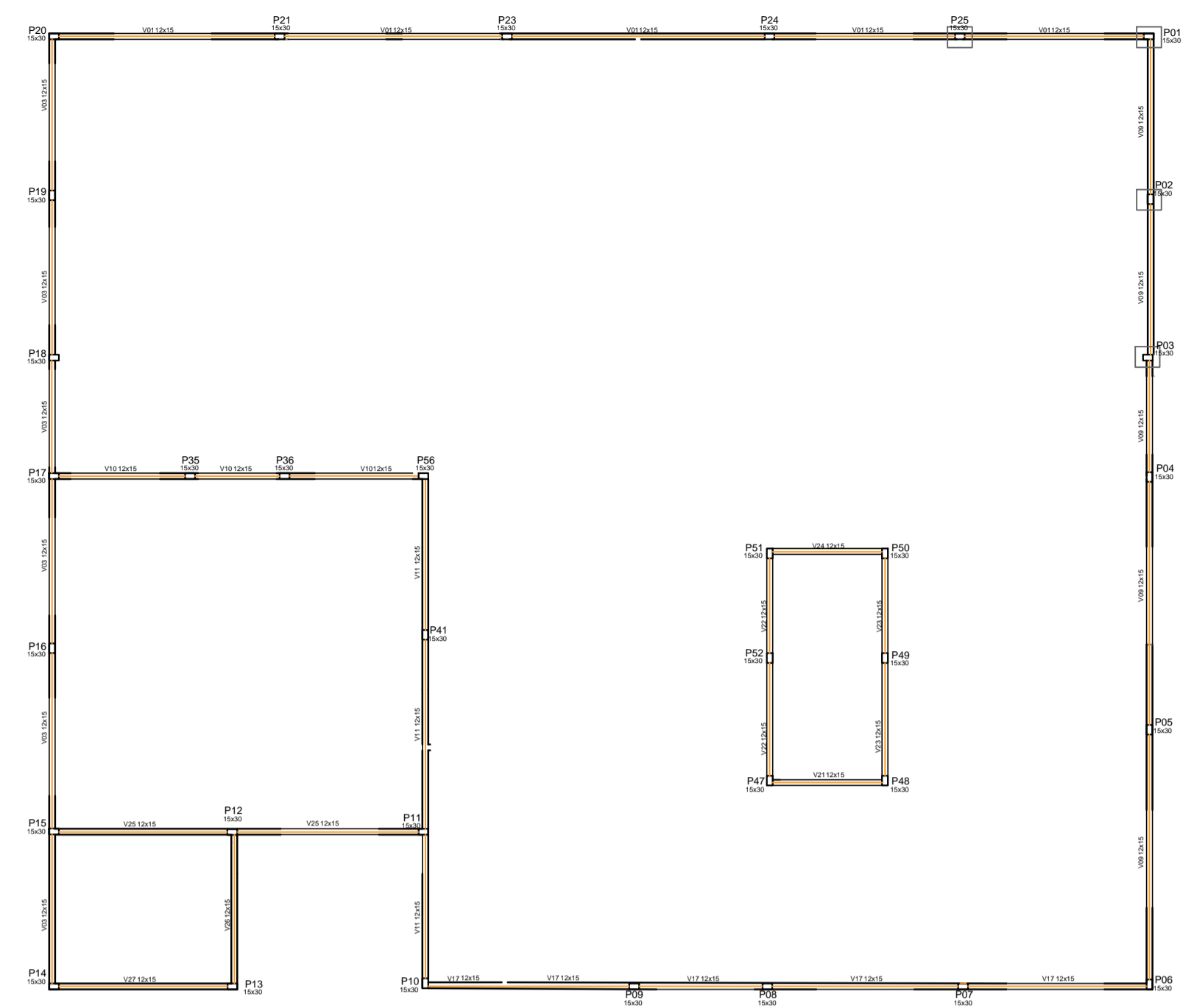
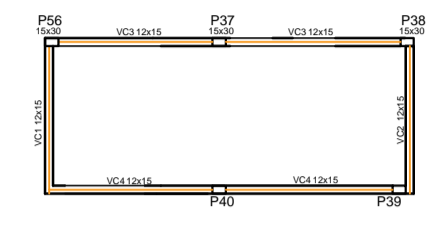


Forma do NÍVEL 300
ESC 1:50



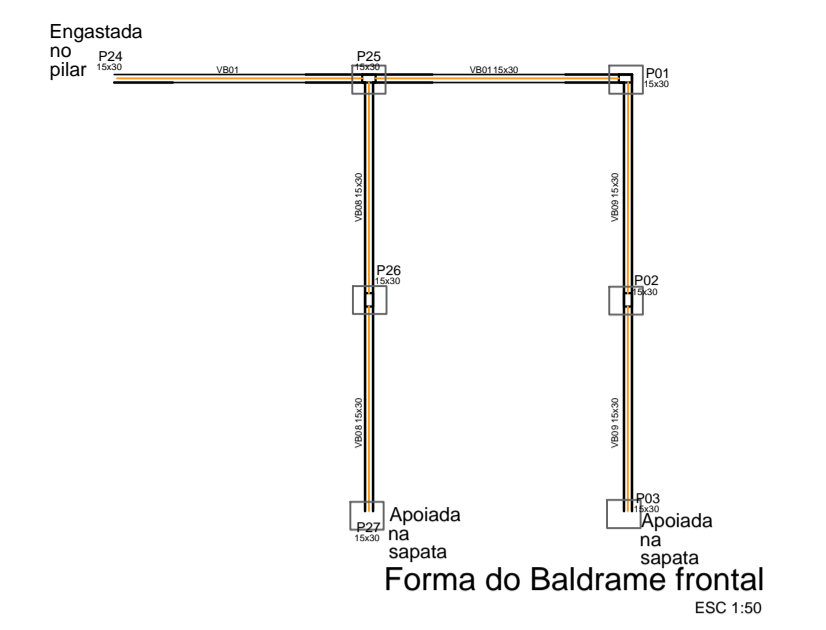
Forma do NÍVEL 450
ESC 1:50



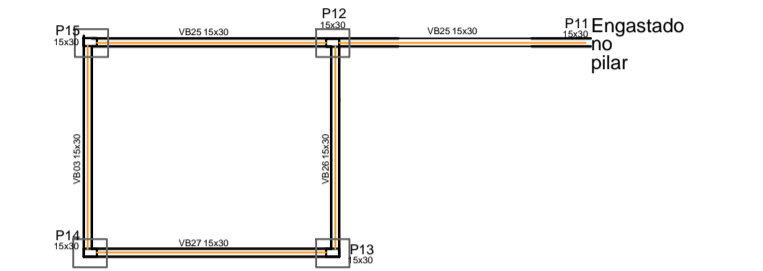
Forma do NÍVEL 550
ESC 1:50

VC1-VC4

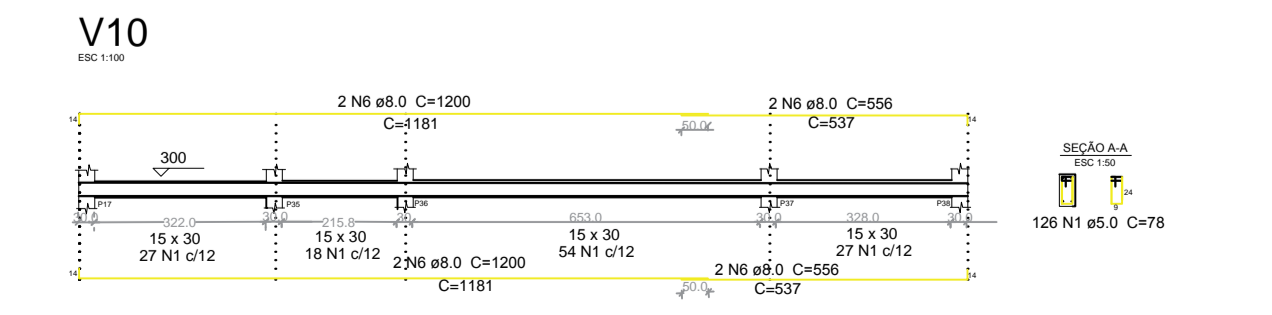
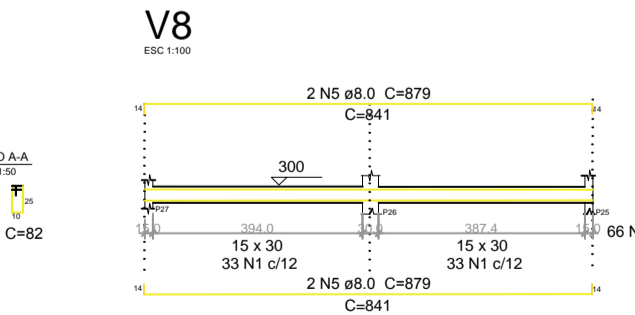
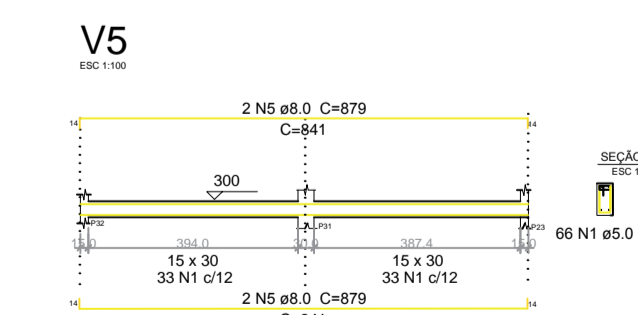
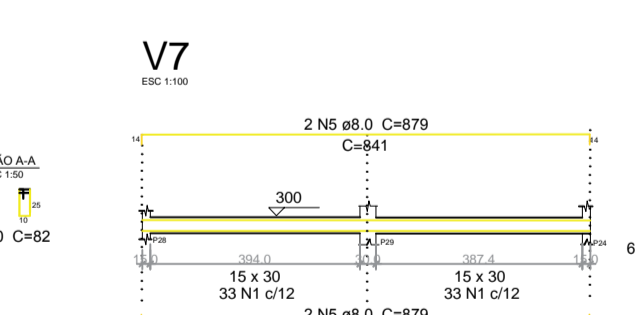
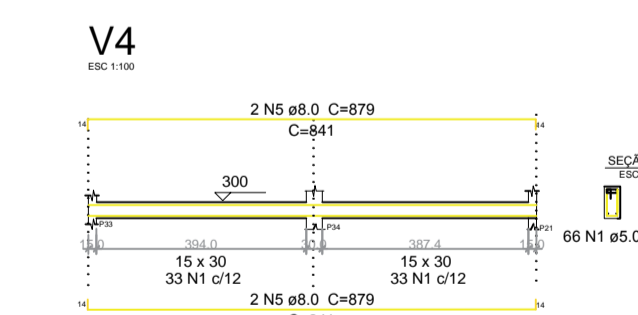
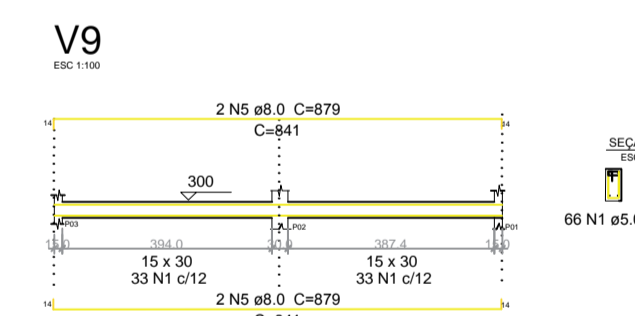
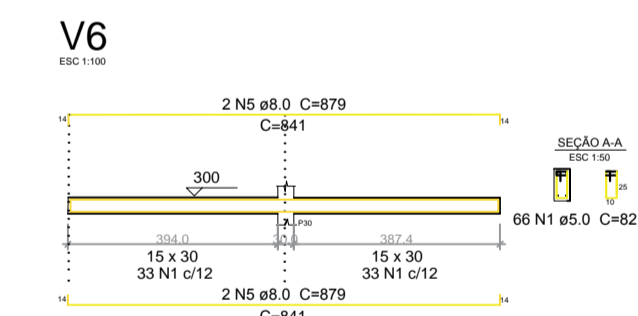
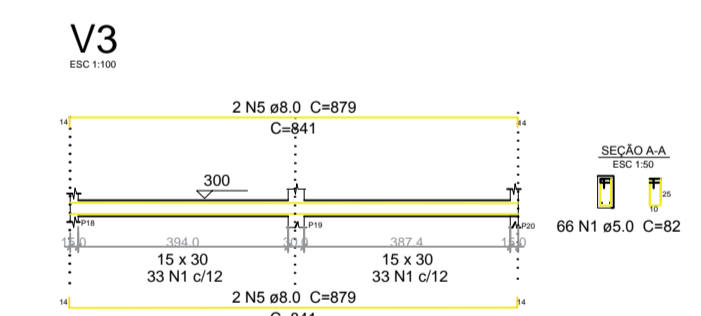
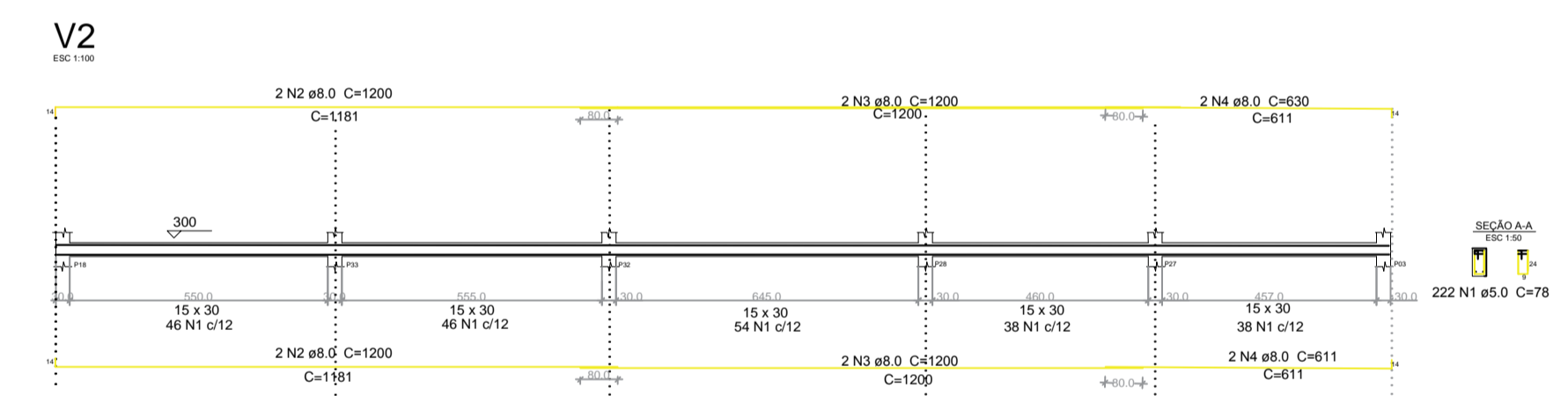
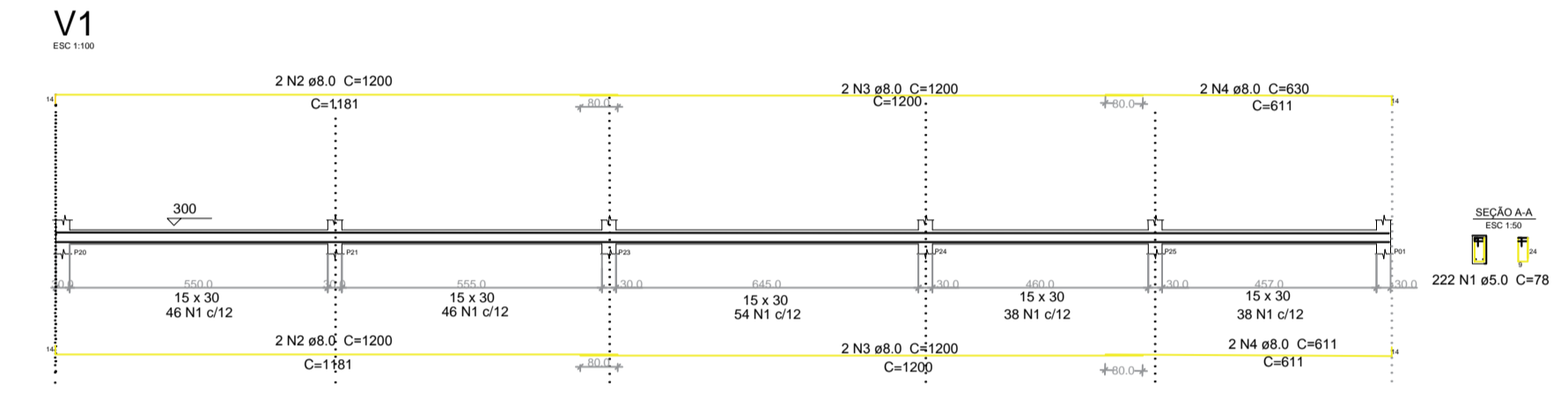
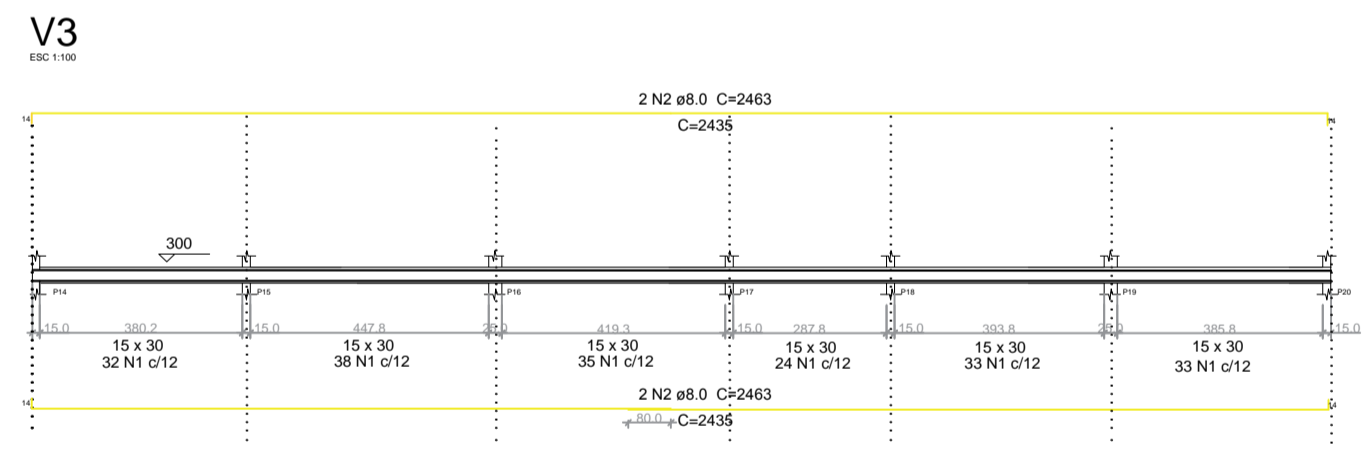
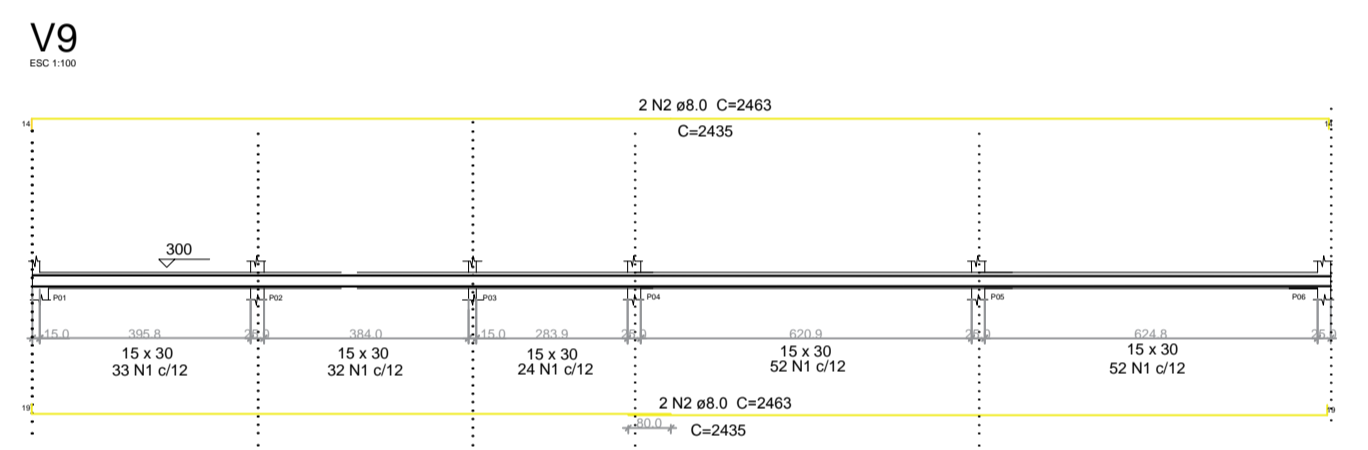
SEÇÃO A-A
N1 ø5.0 C=44



Forma do Baldrame frontal
ESC 1:50



Forma do Baldrame fundos
ESC 1:50



V10-V28

SEÇÃO A-A
N1 ø5.0 C=78

SEÇÃO A-A
N1 ø5.0 C=78

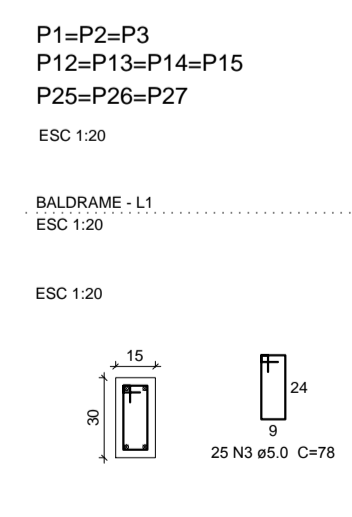
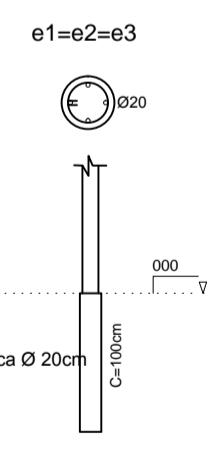
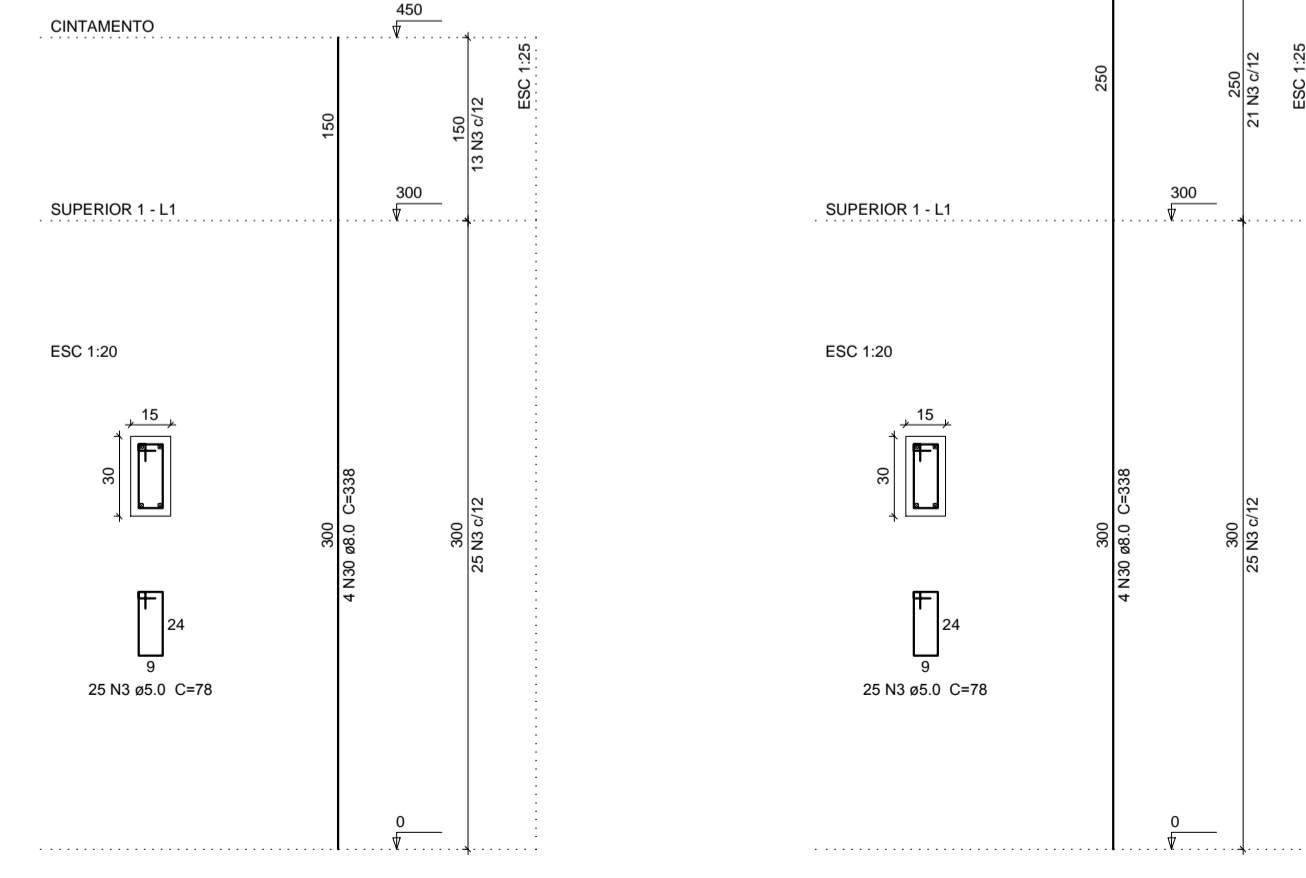
SEÇÃO A-A
N1 ø5.0 C=78

SEÇÃO A-A
N1 ø5.0 C=78

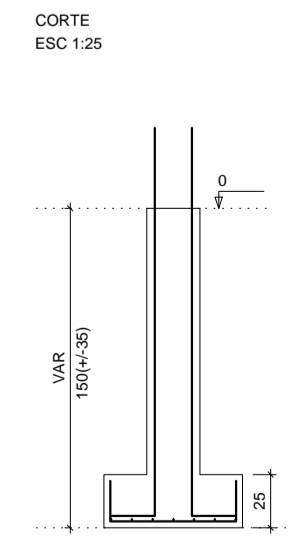
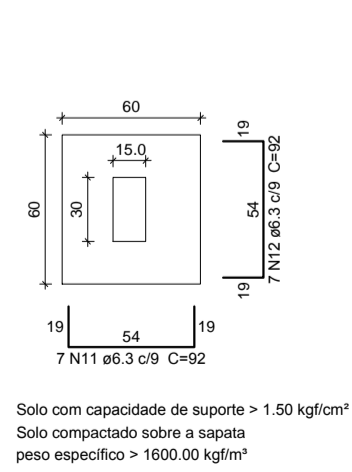
SEÇÃO A-A
N1 ø5.0 C=78

SEÇÃO A-A
N1 ø5.0 C=78

P1=P2=P3=P4=P5=P6=P7=P8=P9=P10
P11=P12=P13=P14=P15=P16=P17=P18=P19=P20
P21=P22=P23=P24=P25=P26=P27=P28=P29=P30
P31=P32=P33=P34=P35=P36
P41=P42=P43=P44=P45=P46=P47=P48=P49=P50
P51=P52=P53=P54=P55



P1=P2=P3
P12=P13=P14=P15
P25=P26=P27



Solo com capacidade de suporte > 1.50 kg/cm²
Solo compactado sobre a sapata
peso específico > 1600.00 kg/m³

CREA:	PREFEITURA:
ESTRUTURAL	
PROJETO:	FOLHA 01/01
OBRAS: REFORMA E AMPLIAÇÃO DO CEM DEBON MARACÁPE PROPRIETÁRIO: PREFEITURA MUNICIPAL DE MIRACEMA DO TOCANTINS LOCAL: SETOR UNIVERSITÁRIO, MIRACEMA DO TO-TO.	JM ENGENHARIA LTDA Fone: (63) 91026-9941
ÁREAS ÁREA CONSTRUÍDA 1.196,83m²	PROPRIETÁRIO ASS.: PREFEITURA MUNICIPAL DE MIRACEMA DO TO AUTOR DO PROJETO ASS.: GABRIEL PERES DE MIRANDA RESPTÉCNICO ASS.: Engenheira Civil ART: Engenheira Civil
ESCALA: INDICADA DATA: 10/04/2022	CONFERIDO: CADASTRADO: REVISADO: Emanuel Guedes
CONTEÚDO: PLANTA DE LOCAÇÃO DETALHAMENTO SAPATAS	
DETALHAMENTO ESTRUTURAL REFORÇOS ESTRUTURAIS	